



## ***The SX-100RT***

Safety is guaranteed on the SX-100RT: the low profile of the hood, the two cameras, the 12" touch screen display, showing machine and engine parameters in real time and the Swivel Seat give the driver a 360 degrees visibility, total control and best comfort.

The anti-tipping system gives great stability to the whole machine. Additional benefits come from the position of the radiator, placed laterally and from the oil exchanger, integrated into extendable counterweight frame.



**LIFT CAPACITY**  
100-ton



**WEIGHT**  
60-ton



**HORSEPOWER**  
415 HP

## Specifications

### Engine

Model	CAT C9.3B EU Stage V / Tier 3 / Tier 4 Final
Rated power	310 kW / 415 HP
Rated speed	1,800 - 2,200 rpm
Displacement	567.5 cu in (9.3 L)
Design	In-line 6, 4-stroke cycle diesel, turbocharged-aftercooled (TA)
Injection system	Direct fuel injection
Batteries	2 x 180 Ah / 12 V

### Travel Drive

Transmission system	Hydrostatic
Travel speed	5 mph (8 km/h)

### Weight

Operating weight	60 ton
Body machine	18 ton
Undercarriage	20 ton
Counterweights	17 ton
Boom	4 ton
Various	0.9 ton

### Hydraulics

#### Hydraulic system

- Pump for winches: variable displacement open circuit
- Pump for drive: variable displacement closed circuit
- Pump for fan drive: fixed displacement open circuit

#### Pump flow max.

- Drive: 600 L
- Winches: 200 L
- Fan drive: 200 L
- Machine general services: 150 L

#### Pressure limitation.

- Drive: 450 bar
- Machine general services: 250 bar
- Winches: 350 bar
- Charge pressure: 32 bar

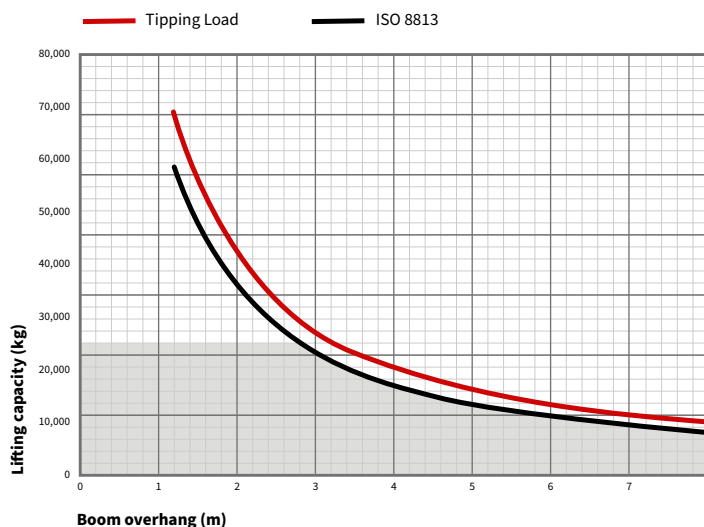
### Hydraulic Winch

Cable diameter	19mm
Cable length	120/125 m
Hook speed (up/down)	9/12 m/min
Safety	Free-fall (Load lifting only)

### Refill Capacities

Fuel tank	550 L
Urea tank	45 L
Hydraulic tank	400 L

## Lifting Chart





**LIFT CAPACITY**  
100-ton



**WEIGHT**  
60-ton

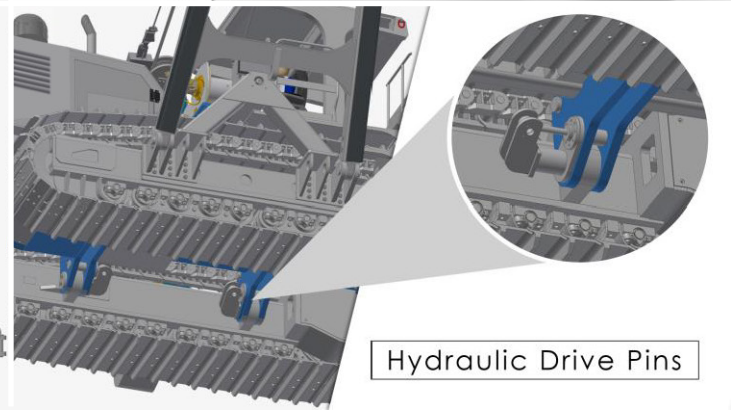
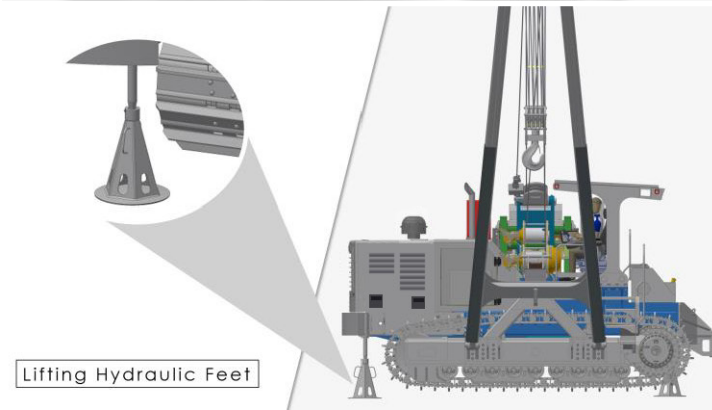
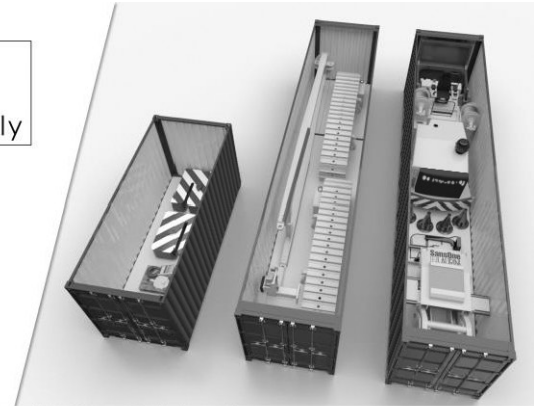


**HORSEPOWER**  
415 HP

## Transportation



Quick  
Assembly  
Disassembly



## Dimensions

